

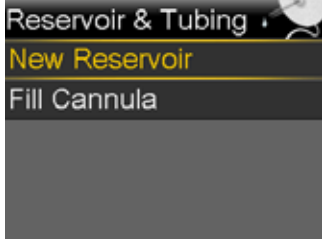
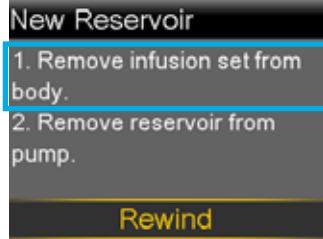


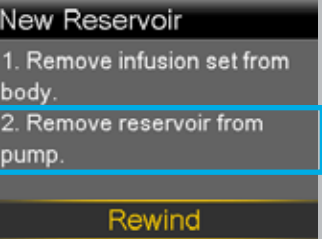
START HERE

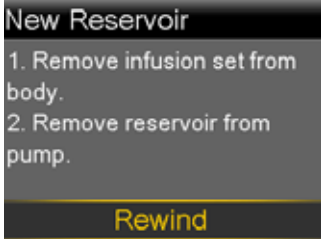
1  Wash your hands. Press **O**. Select **Options**.


2  Select **Reservoir & Tubing**.

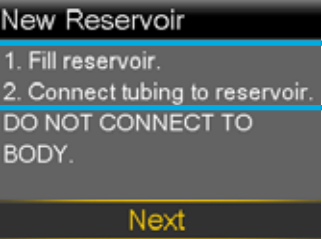
3  Select **New Reservoir**.

4  Remove the infusion set you have been using by loosening the adhesive and pulling away from body.

5  Remove the used reservoir from the pump.

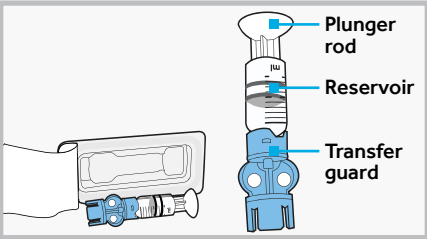
6  Select **Rewind**.

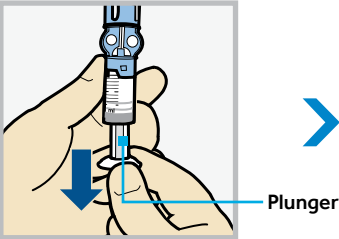
 Please wait...

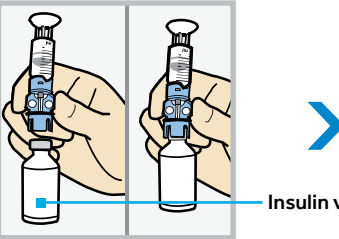
 **Next**

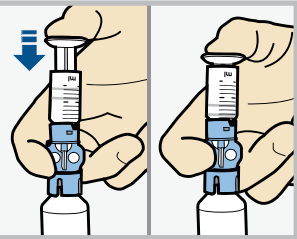
FILL RESERVOIR & CONNECT TO THE INFUSION SET TUBING

Follow the next steps to fill reservoir with insulin and connect to the infusion set tubing.

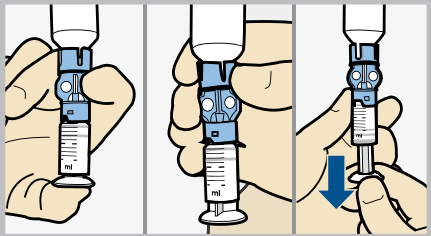
1  Remove from package. Make sure insulin vial is at room temperature to reduce the risk of air bubbles.

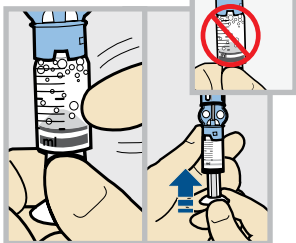
2  Pull plunger down to the amount that you plan to fill with insulin.

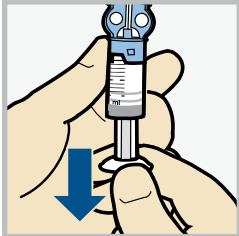
3  Wipe vial with alcohol. Place vial on table. Firmly press the blue transfer guard onto vial.

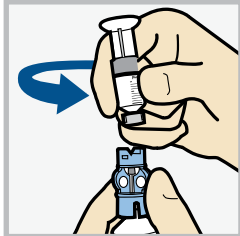
4  Push and hold plunger down.

WARNING: If insulin or any liquid gets inside the tubing connector, it can temporarily block the vents that allow the pump to properly fill the infusion set. This may result in the delivery of too little or too much insulin, which could cause hyperglycaemia or hypoglycaemia.

- 5** 

With your thumb still on the plunger, flip over so vial is on top. Release thumb and pull plunger down to fill with insulin.
- 6** 

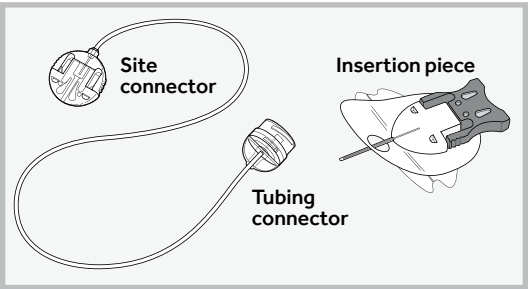
Tap the reservoir to move air bubbles to top of reservoir. Push plunger up to move air into vial.
- 7** 

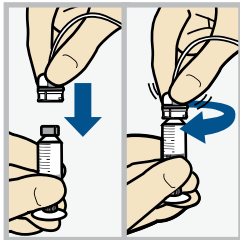
If needed, pull plunger back down to amount of insulin needed for 2-3 days.
- 8** 

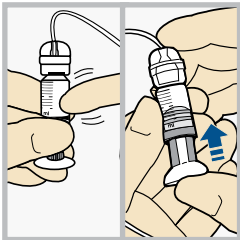
To avoid getting insulin on the top of the reservoir, turn vial over so it is upright. Hold transfer guard and turn reservoir counter-clockwise and remove from transfer guard.

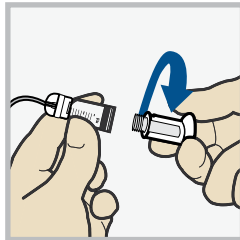
CONNECT RESERVOIR TO INFUSION SET

You will place the tubing connector onto the end of the infusion set to the filled reservoir.

- 1** 

Remove the infusion set from packaging.
- 2** 

Gently push the tubing connector onto reservoir. Turn clockwise until locked. You will hear a click.
- 3** 

If you see air bubbles, tap reservoir to move them to top. Push plunger just a bit to move them into tubing.
- 4** 

Twist the plunger counter-clockwise to loosen and remove.



THE BACKLIGHT MAY HAVE TURNED OFF

Press any button to turn the screen back on.



Press **O** to open the menu. If the pump is locked, you will need to unlock the pump after pressing **O**.



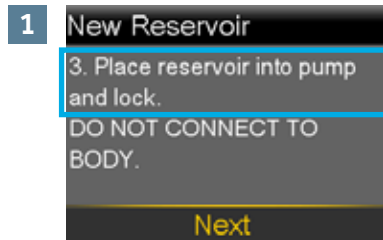
Select **Load Reservoir** from the menu.



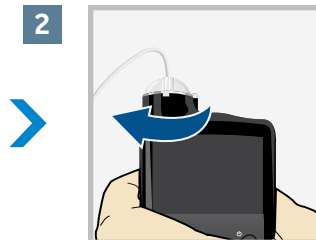
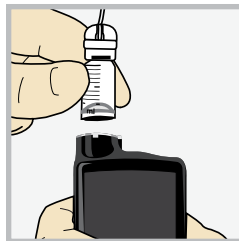
Select **Next**.

PLACE RESERVOIR INTO PUMP

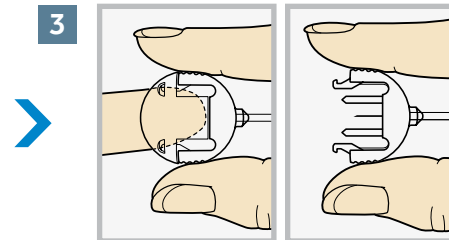
Now place the filled reservoir into the reservoir compartment of the pump.



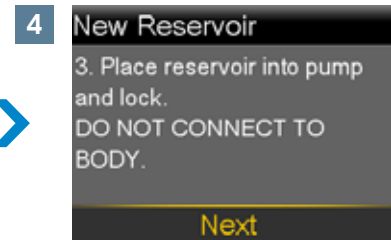
Place reservoir into pump.



Turn clockwise until you feel reservoir lock into place.



Press the edges of the site connector. With the other hand, pull the cap off.



Select **Next**.

LOAD RESERVOIR AND FILL TUBING

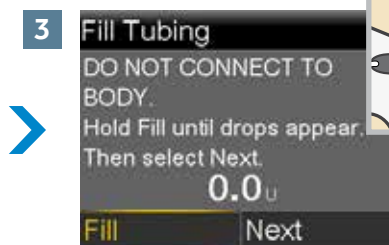
Follow these steps to load the reservoir and fill the tubing.



Select **Load** and keep holding **O**.



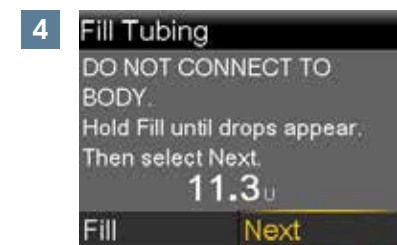
When you see this screen, select **Next**.



Select **Fill** and keep holding **O** until you see drops at the end of tubing, then let go.



Drops at end of tubing

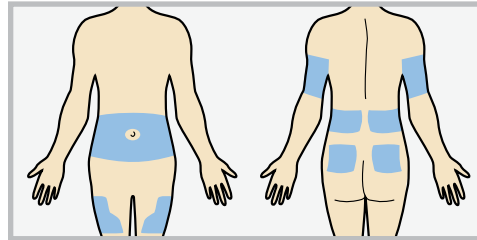
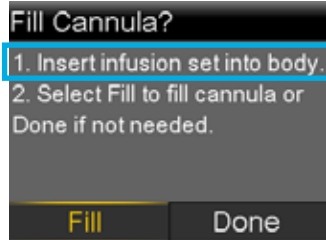


After you see drops, press **>** and select **Next**.

Continued on next page

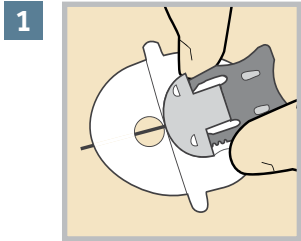
INSERT INFUSION SET (TWO METHODS)

Next, follow the steps to insert the infusion set into your body.

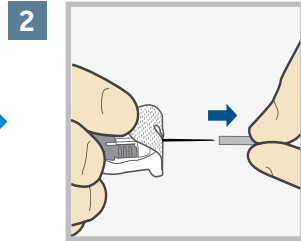


Choose an insertion site from the shaded areas shown here. Wipe with alcohol or other antiseptic.

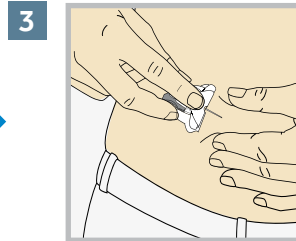
METHOD 1: BY HAND



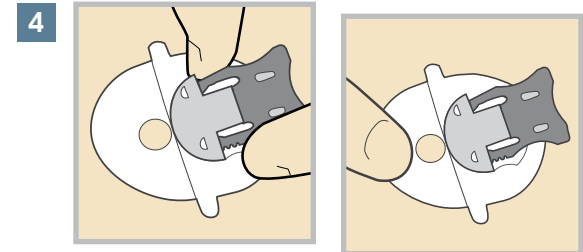
1 Hold the insertion piece by the gray needle handle using the thumb and middle finger.



2 Hold the tape with your forefinger and remove the needle guard.

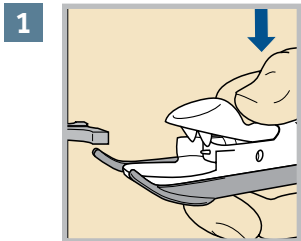


3 Pinch up skin at prepared site. Use other hand to insert needle at a 20-45 degree angle.

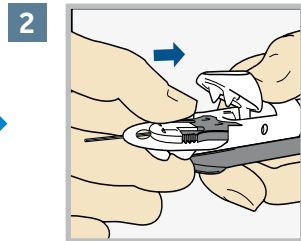


4 After it is inserted release the skin and hold inserted piece in place. **Now go to the REMOVE INTRODUCER NEEDLE section on page 5.**

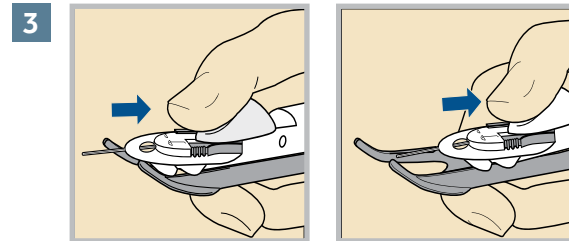
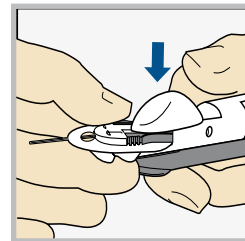
METHOD 2: USING THE SERTER



1 Use thumb to press down on the Lock & Release handle of theserter.



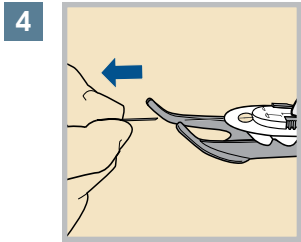
2 Place the insertion piece inside sertser and let go of the Lock & Release handle. The sertser prongs should fit securely into the holes of the insertion piece.



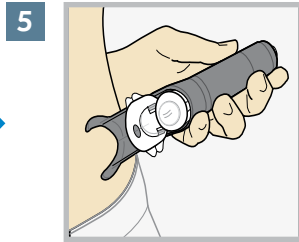
3 Use thumb to slide the Lock & Release handle back until you hear a click.



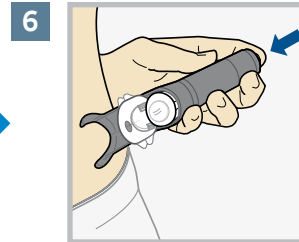
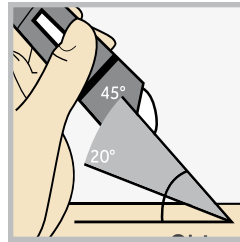
METHOD 2: USING THE SERTER (CONT.)



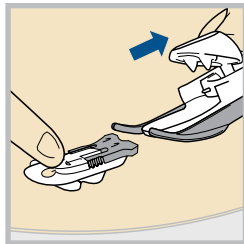
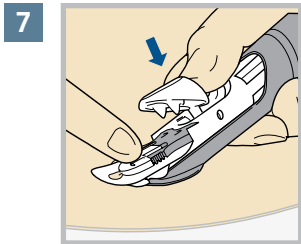
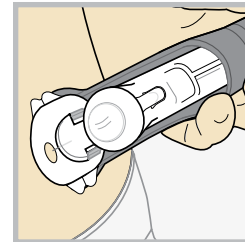
Gently pull off needle guard.



Rest arms of sserter against skin so that it is at a 20-45 degree angle.



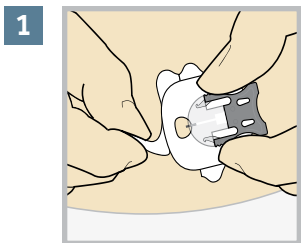
Press the white button at the top of sserter to insert the infusion set.



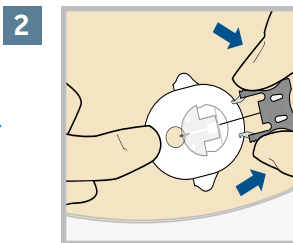
Hold infusion set against skin with one hand. With the other hand press the Lock & Release handle to open sserter. Then, slide sserter back from infusion set.

REMOVING INTRODUCER NEEDLE

Next, follow the steps to remove the introducer needle.



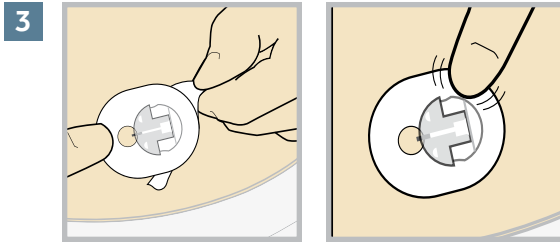
Peel paper from the front part of the adhesive and press adhesive securely to skin.



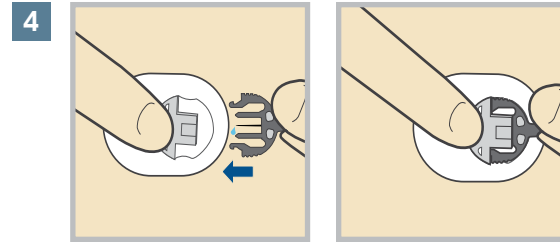
Squeeze arms on the gray needle handle and pull back to remove introducer needle.



DISPOSE NEEDLE INTO A SHARPS CONTAINER



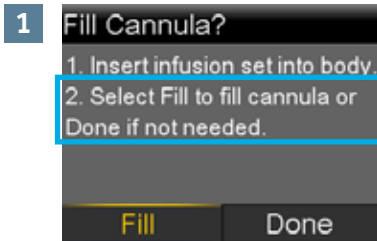
Peel rest of the paper without lifting infusion set too far from skin. Press adhesive securely to skin. Dispose needle into a sharps container.



Connect infusion set tubing by sliding the site connector into the insertion piece on your skin.

FILL CANNULA

You will now fill the cannula, the little tube under your skin, with insulin.



Select **Fill**.



Select **Fill amount** and enter 0.700. Then press **○**.



NOTE: Your pump will remember the **Fill amount** that you used last. Always verify that the Fill amount is correct.

- If it is correct, press **▼** to **Fill Now** and press **○**.
- If it is incorrect, press **○**. Change to correct amount and press **○**. Select **Fill Now**.



Select **Fill Now**.



The Home screen displays the insulin as it fills the cannula.



NOTE: Select **Stop Filling** if you need to stop, for example, if you notice the **Total** amount is incorrect. This should rarely happen if you have verified the **Fill amount** on the previous screen.

Your infusion set change is now complete!

Always read instructions for use