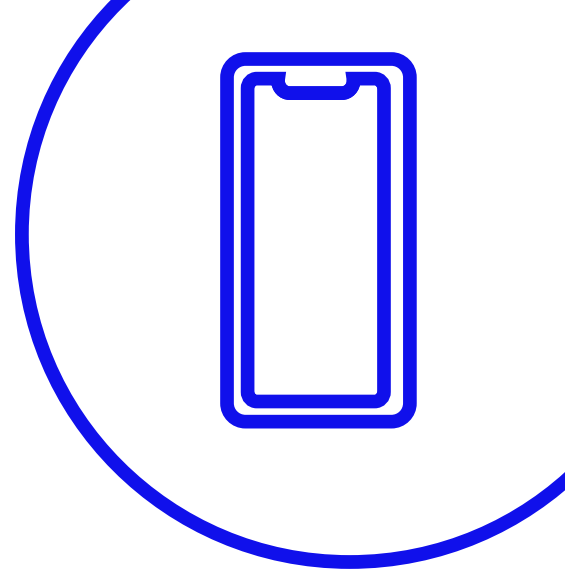


**Medtronic**

# Top 5 Tips

## MiniMed™ Mobile and CareLink™ Connect Apps



### **1** Flick off the Switch

Ensure that Automatic Updates are turned OFF in your phone

### **2** Remember that username and password

Due to system changes, fixes and enhancements there will be times that will require you to log back in using your current CareLink™ user name and password. Always make sure that you have saved these and easy to get when you need it

### **3** Take a look

Open the Minimed™ Mobile App every 24hrs to view your latest glucose trends this keeps the app live

### **4** Initiate & Update

Get social with us and know when a new iOS or OS version is compatible with your smartphone Follow us on Instagram @medtronicdiabetesaus or 'Opt In' to our email list and we will send you emails of future updates and planned maintenance

Or just view our list of latest supported devices on our website <https://www.medtronic-diabetes.com.au/mm780g-supported-devices>

### **5** Make the most of your appointment

Automatic downloads happen daily and if you really want to impress your healthcare team manual upload through the MiniMed™ Mobile app the morning of your appointment. This means they will be able to see your latest data. This can be done in 3 easy steps in your app.

Go to Menu, Sync to Carelink, and Upload now.



### **Need a sensor replacement?**

Call the helpline at 1800 777 808



### **Have more questions or would like some more training?**

Call the helpline at 1800 777 808 24 hours a day, 365 days per year or your healthcare team. Both can put you in touch with your local Medtronic Clinical Specialist who are more than happy to help with technical advice.



# We're with you on this journey

### **Always follow the directions for use**

The MiniMed 780G insulin pump is indicated for use by patients age 7-80 years with Type 1 diabetes, whose total daily dose of insulin is 8 units per day or more. Indications for GS4 The Guardian sensor 4 is intended for insertion into persons ages 7 years and older.

2 Alma Road  
Macquarie Park  
NSW 2113  
Tel: +61 2 9857 9000  
Fax: +61 2 9889 5167  
Toll Free: 1800 777 808  
[medtronic-diabetes.com.au](http://medtronic-diabetes.com.au)

\*If sensor glucose (SG) values do not match symptoms or expectations, use a blood glucose meter to make diabetes treatment decisions. Refer to System User Guide

Information contained herein is not medical advice and should not be used as an alternative to speaking with your doctor. Discuss indications, contraindications, warnings, precautions, potential adverse events and any further information with your healthcare professional