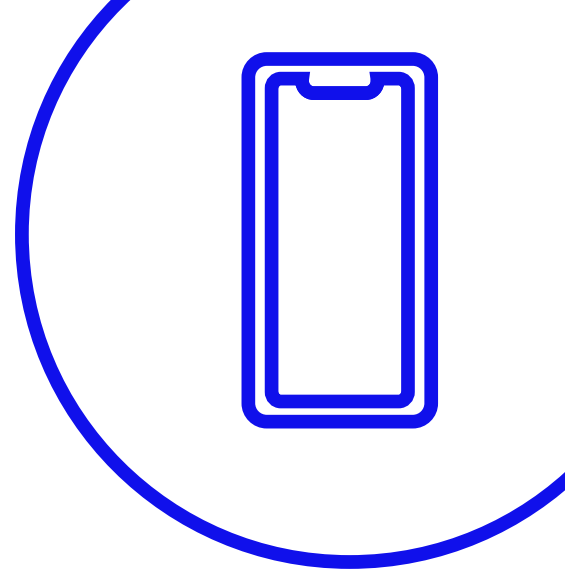


Medtronic

Top 5 Tips

CareLink™ Connect App



1 Stay up to date

Make sure you have the latest version of the app by checking the app store. If an updated version is available, update it first.

2 Flick off the Switch

Ensure that Automatic Updates are turned OFF on your Smart Device.

3 Where are my alerts?

If you stop receiving alerts check the app has not been closed. You need to always have it open or running in background, so check phone settings and ensure alerts are turned ON & ensure notifications are set up in the app.

4 Show me the data

When "No data from..." banner appears make sure the person you are following is within 6 metres of their pump, their MiniMed™ Mobile app is connected to the internet, they are logged into CareLink™ Personal and has the Sync to CareLink feature turned ON.

If you see the "No data from..." banner, you can opt to 'Send a message' to the pump user.

5 It's all about connection

'No CareLink™ Personal Connection' occurs when the app is unable to communication with CareLink™ Personal or there is a CareLink™ outage.

Outages are rare and planned maintenance is communicated directly to you via email so make sure to opt in for communications. You can also find information on our social media platforms @medtronicdiabetesau



Need a sensor replacement?

Call the helpline at 1800 777 808



Have more questions or would like some more training?

Call the helpline at 1800 777 808 24 hours a day, 365 days per year or your healthcare team. Both can put you in touch with your local Medtronic Clinical Specialist who are more than happy to help with technical advice.



We're with you on this journey

Always follow the directions for use

The MiniMed™ 780G insulin pump is indicated for use by patients age 7-80 years with Type 1 diabetes, whose total daily dose of insulin is 8 units per day or more. Indications for GS4 The Guardian™ 4 sensor is intended for insertion into persons ages 7 years and older.

2 Alma Road
Macquarie Park
NSW 2113
Tel: +61 2 9857 9000
Fax: +61 2 9889 5167
Toll Free: 1800 777 808
medtronic-diabetes.com.au

*If sensor glucose (SG) values do not match symptoms or expectations, use a blood glucose meter to make diabetes treatment decisions. Refer to System User Guide

Information contained herein is not medical advice and should not be used as an alternative to speaking with your doctor. Discuss indications, contraindications, warnings, precautions, potential adverse events and any further information with your healthcare professional